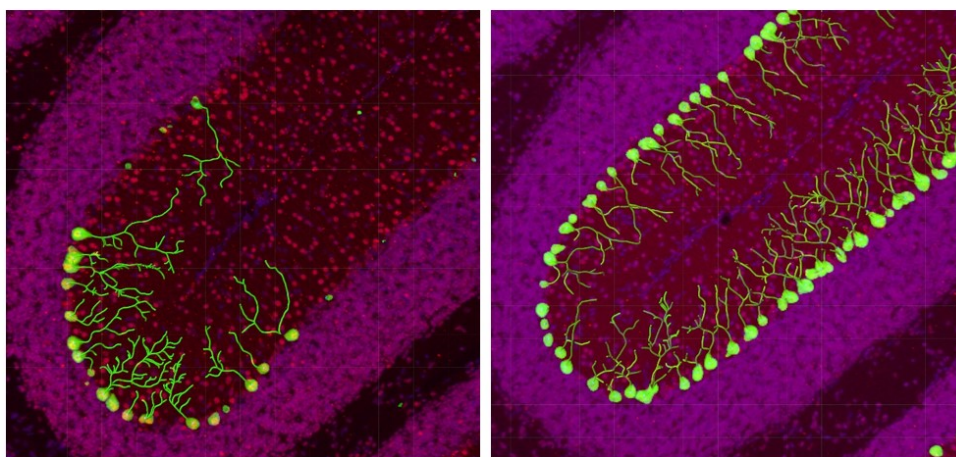




## Genetic screening strategy to identify the targets that decrease the levels of the disease-driving proteins



A common pathogenic mechanism among neurodegenerative disorders such as Alzheimer, Parkinson, and polyglutamine diseases is the abnormal accumulation of disease-causing proteins. This is a consequence of either mutation, or excessive levels of the wild-type version of the causative protein. Here, we developed a cross-species screening strategy to identify therapeutic entry points in the genetic networks governing the levels of disease-driving proteins. Our approach reveals new therapeutic entry points for neurodegenerative diseases.

**Dr. Jeehye Park**

SickKids Research Institute  
Candidate for Faculty Appointment

---

Host: Dr. Barbara Funnell

**Date:** Monday, January 11<sup>th</sup>, 2016

**Time:** 4PM

**Place:** 1 King's College Circle, Medical Sciences Building, Room 4171