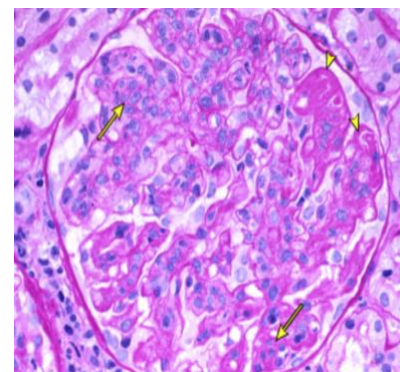
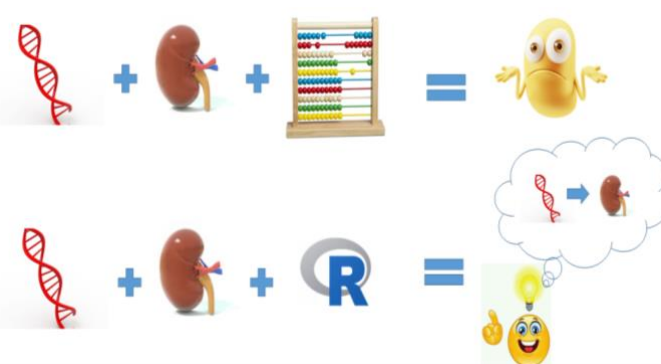
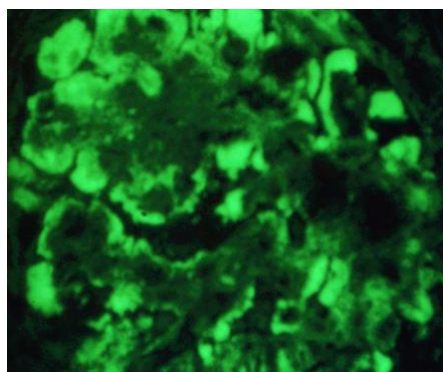




RESEARCH INSTITUTE SEMINAR SERIES

RESEARCH CONNECTIONS

A Research Institute seminar series showcasing successful partnerships between researchers in different research programs or in basic and clinical research. Each seminar highlights the connections that have led to impactful discoveries and stimulate future productivity.



Featured Speakers

LINDA HIRAKI

MD, FRCPC, ScD
Staff Physician, Division of Rheumatology, Scientist, Genetics & Genome Biology (GGB), SickKids Research Institute; Assistant Professor Pediatrics and Epidemiology, DLSPH, University of Toronto

ELEANOR PULLENAYEGUM

PhD
Senior Scientist, Child Health Evaluative Sciences (CHES), SickKids Research Institute; Associate Professor, University of Toronto

Beyond the t-test: How advanced statistical methods expand understanding of genetics of kidney function in lupus

Systemic lupus erythematosus (SLE) is a life threatening multisystem autoimmune disease. Lupus nephritis (LN) is one of the most severe manifestations of SLE, affecting up to 75% of SLE patients. Despite evidence that LN clusters in families, and prevalence and severity varies by race/ethnicity, genetic studies of LN risk have not identified susceptibility loci reaching genome-wide significance. This may be due to limitations of cross-sectional study design. No prior LN genetic studies have capitalized on repeated renal measures, nor maximized power by utilizing quantitative renal measures. We are applying statistical methods for longitudinally collected, repeated renal measures of kidney function in children and adults with SLE, to identify genetic determinants of LN.

Panel

Brian Feldman, Division Head, Rheumatology, Senior Scientist, CHES

Elizabeth Harvey, Staff Physician, Nephrology

Andrea Knight, Staff Physician, Rheumatology, Clinician Investigator, Neurosciences & Mental Health (NMH)

Deborah Levy, Staff Physician, Rheumatology, Director, Lupus Clinic, Team Investigator, CHES

Andrew Paterson, Senior Scientist, Genetics & Genome Biology (GGB), Co-Director of the Statistical Analysis Facility, The Centre for Applied Genomics (TCAG)

Thai-Son Tang, PhD Student, Biostatistics, Dalla Lana School of Public Health, UofT

Tuesday, November 24, 2020, noon to 1 p.m.

Join on ZOOM

<https://zoom.us/j/98510806223?pwd=ZGIkd0JBdzVHTWJrZ0d0dUpHTklqdz09>

Meeting ID: 985 1080 6223 Passcode: 714143 **More details:** joanne.sitarski@sickkids.ca